

USER MANUAL

XTR 1050W



Please read this manual carefully before using!
Power Tool Safety

Please read and understand all instructions. Failure to follow all instructions listed below could result in electric shock, fire and/or serious injury.

1. GENERAL INFORMATION

1.1 Workspace

Keep your work area clean and well lit. Cluttered benches and dark areas cause accidents or injuries.

Do not operate power tools in explosive atmospheres, such as in the presence of flammable liquids, gases or dust. Power tools create sparks that can ignite dust or fumes.

Keep bystanders, children and visitors away while operating a power tool. Distractions can cause you to lose control.

1.2 Electrical safety

Before connecting the tool, check that the output voltage provided is within the voltage of the machine. Do not use tools rated “AC only” with a DC power supply.

Avoid body contact with grounded surfaces such as pipes, radiators, ranges and refrigerators. There is an increased risk of electrical shock if your body is grounded. If operating the power tool in wet locations is unavoidable, a Ground Fault Switch must be used to supply power to your tool. The electrician’s rubber gloves and shoes will further enhance your personal safety.

Do not expose power tools to rain or wet conditions. Water entering a power tool will increase the risk of electrical shock.

Do not abuse the cable. Never use the cord to carry the tool or pull the plug from an outlet. Keep cord away from heat, oil, sharp edges or moving parts. Replace damaged cables immediately. Damaged cables increase the risk of electrical shock.

When operating a power tool outdoors, use an external extension cord. These cables are rated for outdoor use and reduce the risk of electrical shock.

1.3 Personal Security

Pay attention, watch what you are doing, and use common sense when operating a power tool. Do not use the tool while tired or under the influence of drugs, alcohol or medication. A moment of inattention when operating power tools could result in serious injury.

Dress appropriately. Do not wear loose clothing or jewelry. Contain long hair. Keep your hair, clothing and gloves away from moving parts. Loose clothing, jewelry or long hair can be caught in moving parts. Keep handles dry, clean and free from oil and grease.

Avoid accidental departure. Make sure the power switch is "OFF" before turning it on. Carrying tools with your finger on the switch or connecting tools that have the switch "ON" invites accidents.

Remove adjustment from wrenches or spanners before starting the tool. A spanner or Allen wrench that is left attached to a rotating part of the tool could result in personal injury.

Do not exaggerate. Maintain proper balance and balance at all times. Proper balance and balance allow better tool control in unexpected situations.

Wear safety equipment. Always wear eye protection. Dust mask, non-skid safety shoes, hard hat, or hearing protection must be worn for appropriate conditions.

1.4. Residual Risks

Even when the tool is used as prescribed, it is not possible to eliminate all residual risk factors. The following risks may arise in connection with the construction and design of the tools:

A) - damage to lungs if an effective dust mask is not used.

B) - Hearing damage if effective hearing protection is not used.

Health defects resulting from the emission of vibrations if the power tool is being used for longer periods of time or is not properly managed and maintained properly.

WARNING This machine produces an electromagnetic field during operation. This field can, in some circumstances, interfere with active or passive medical implants. To reduce the risk of serious or fatal injury, we recommend that anyone with implants

Doctors consult your physician and the manufacturer of the medical implant before operating this machine.

1.4 Use of tools and care

Do not force the tool. Use the correct tool for your application.

The right tool will do the job better and safer at the rate it was designed for.

Do not use the tool if the on/off switch does not turn it "ON" or "OFF". Any tool that cannot be controlled with the commutator is dangerous and must be repaired.

Disconnect the plug from the power source before making adjustments, changing accessories, or storing the tool. Such preventive safety measures reduce the risk of starting the tool accidentally.

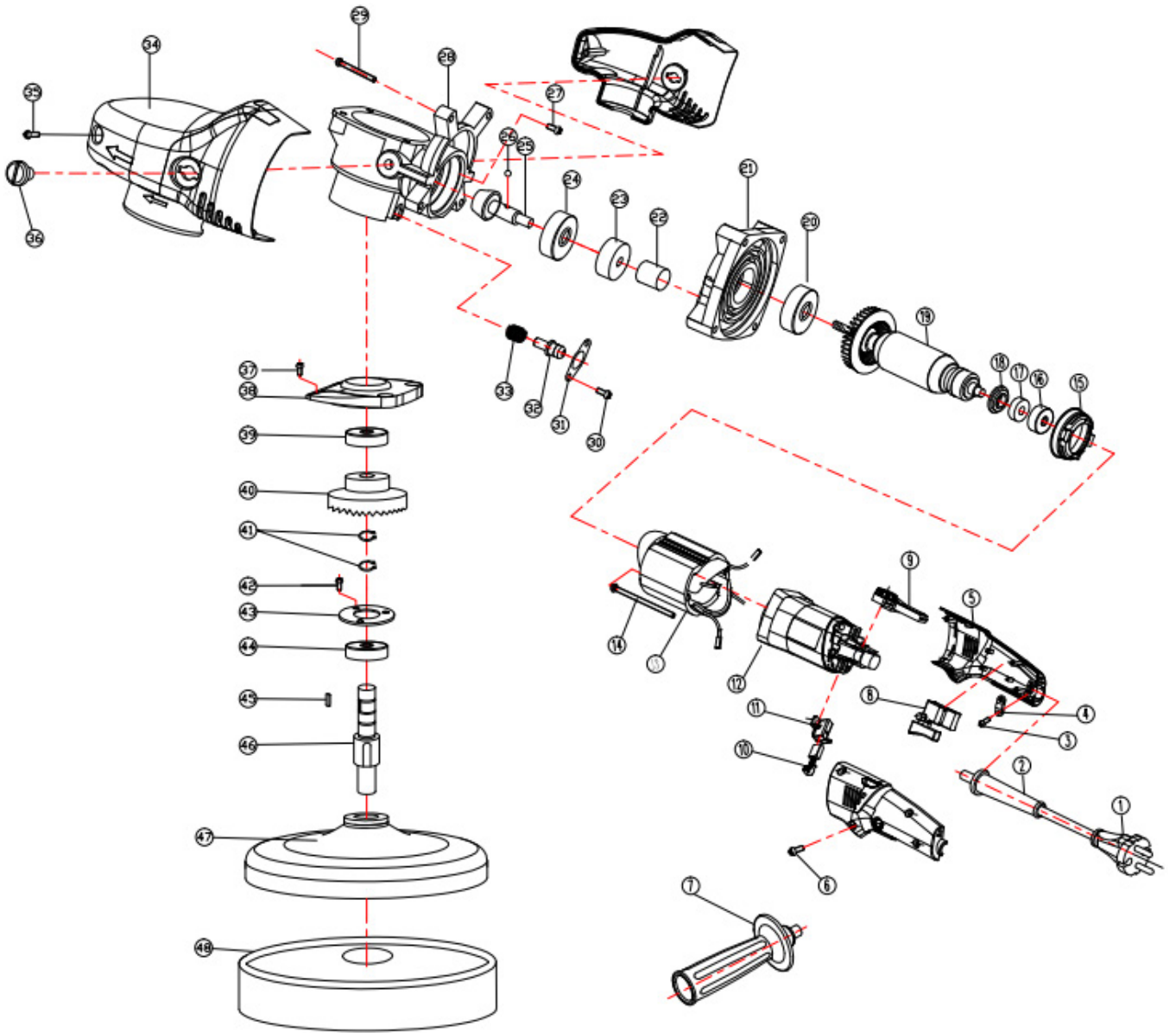
Store idle tools out of reach of children and other untrained people. Tools are dangerous in the hands of untrained users.

Check for misalignment or binding of moving parts, breakage of parts, and any other condition that could affect operation. If damaged, have the tool serviced before use. Many accidents are caused by poorly maintained tools. Develop a periodic maintenance schedule for your tool.

Only use accessories recommended or included for your model. Accessories that may be suitable for a tool can become dangerous

! WARNING Preventive maintenance performed by unauthorized personnel can result in the loss of wires and internal components which can cause serious problems. We recommend that all service tools be performed by a factory authorized service station.

12-month warranty, upon presentation of the Purchase Invoice (including a 3-month warranty as per the consumer protection code law 8078 / 90. 9 months granted by the manufacturer).



P.No.	Parts Name	Q'ty	P.No.	Parts Name	Q'ty
1	Cord	1	25	Gear shaft	1
2	Cord sleeve	1	26	Steel ball Ø3	1
3	Screw ST4X14	2	27	Screw M4x10	2
4	Cord anchor	1	28	Gear box	1
5	Rare handle	1	29	Screw ST4X45	4
6	Screw ST4X16	4	30	Screw ST4X10	2
7	Side handle	1	31	Self-lock cover	1
8	Switch	1	32	Self-lock pin	1
9	Speed controller	1	33	Spring	1
10	Carbon brush	2	34	Head cover	1
11	Brush holder	2	35	Screw ST4X16	2
12	Housing	1	36	Plastic screw M4X12	2
13	Stator	1	37	Screw ST4X14	4
14	Screw ST4X65	2	38	Gear box cover	1
15	Air defector	1	39	Bearing 6001	1
16	Bearing sleeve 607	1	40	Big gear	1
17	Bearing 607	1	41	Circlip for shaft 12	1
18	Magnetic Ring	1	42	Screw M4x10	3
19	Armature	1	43	Bearing cover	1
20	Bearing 609	1	44	Bearing 6201	1
21	Middle cover	1	45	Square key 4X4X12	1
22	Needle bearing HK0609	1	46	Output Shaft	1
23	Small gear	1	47	Back pad	1
24	Bearing 6200	1	48	Foam pad	1

Technical assistance

In case of manufacturing defect, the warranty must be triggered through the channels:

E-mail: assistance@kersbr.com
or by phone 55 47 3075.0065

If there is no technical assistance accredited in your city, Kers Importers will provide the reverse postage authorization code so that the shipment can be made free of charge, the designated technical assistance will be Kers Importers.

S
R
E
K

KERS